

How to set up VPN for iBuilder/iMonitor

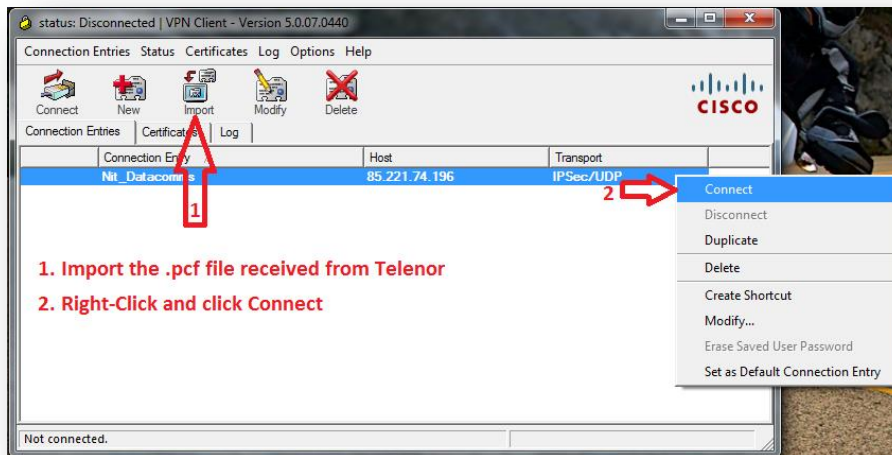
Prepared by: TSBc
Prepared for: TSBc Customers
Version: 1.0

Approved by:
Security classification: TSBc Customers
Date last update: 19/02-2015

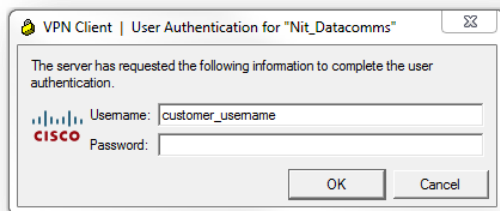


Setting up VPN connection (Distributed NMS version)

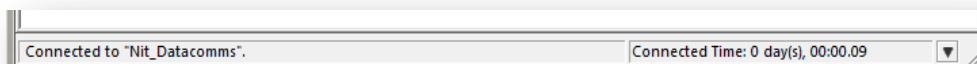
1. Request VPN access by sending an e-mail to helpdesk.nittedal@telenor.com
2. Download Cisco VPN Client from the Internet
3. Telenor will send you **.pcf** file which you will need to import into your Cisco VPN Client.
Telenor will also send you two **.bat** files (**imonitor.bat** and **ibuilder.bat**) in order to achieve connectivity towards our iDirect HUB Distributed NMS-servers (3 active NMS-servers).
4. Telenor will provide you with the Login details:
 - a. *Username_1* & *Username_2*
 - b. *Password_1* & *Password_2*
5. Import the **.pcf** file to your Cisco VPN Client as it's shown below in the picture
6. Right-click and click **Connect**



7. Type in your login credentials (username/password)



8. When VPN connection is successfully established, you will see status Connected at the bottom.



9. Save the two **.bat** files (**imonitor.bat** and **ibuilder.bat**) in the same folder as **iMonitor.exe** and

How to set up VPN for iBuilder/iMonitor

Prepared by: TSBc

Prepared for: TSBc Customers

Version: 1.0

Approved by:

Security classification: TSBc Customers

Date last update: 19/02-2015



iBuilder.exe files, for example folder: **C:\Program Files (x86)\iDIRECT\NMS\15.0.0.0**

10. Open iBuilder/iMonitor using the **imonitor.bat** and **ibuilder.bat** files and enter your iBuilder/iMonitor username and password that has been provided to you. Server IP address is **10.128.4.31**.



11. Please update or create new shortcuts pointing towards the **imonitor.bat** and **ibuilder.bat** files, instead of the iMonitor.exe and iBuilder.exe files.
12. Below is shown how to create your own **ibuilder.bat** file using Note Pad.

Write the following lines into Note Pad:

```
-----  
@ECHO OFF  
SET ENV_NRD_NMSAPI_IPADDR=10.128.4.32  
SET ENV_EVT_NMSAPI_IPADDR=10.128.4.33  
SET ENV_LAT_NMSAPI_IPADDR=10.128.4.33  
ibuilder.exe  
-----
```

Rename the Note Pad file to **ibuilder.bat**.

13. Below is shown how to create your own **imonitor.bat** file using Note Pad.

Write the following lines into Note Pad:

```
-----  
@ECHO OFF  
SET ENV_NRD_NMSAPI_IPADDR=10.128.4.32  
SET ENV_EVT_NMSAPI_IPADDR=10.128.4.33  
SET ENV_LAT_NMSAPI_IPADDR=10.128.4.33  
imonitor.exe  
-----
```

Rename the Note Pad file to **imonitor.bat**.